



€

ENTENLEBER

Chicorée | Kirsche | Spekulatius ^{5 | 11 | 13 | 15 | 16 | 24}

12

SCHWARZWURZEL

Samtsüppchen | Kaffeeschaum ^{5 | 15 | 24}

9

ONSENEI

Kartoffel | Spinat | Grüne Sauce ^{13 | 15 | 17}

14

LECHLERS BARSCH

Perlgraupen | Kranbeere | Weinschaum ^{5 | 11 | 14 | 17 | 18 | 20 | 24}

22

WILDGULASCH

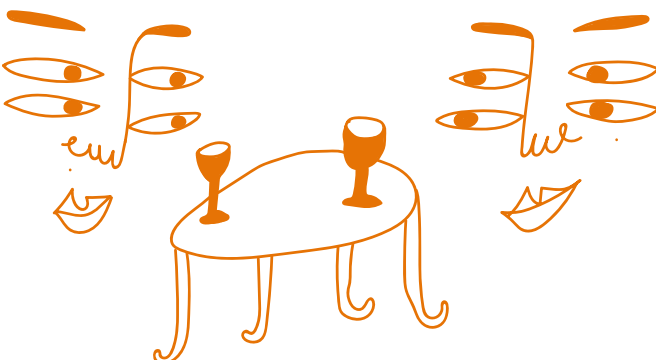
Brombeere | Kartoffelgratin ^{5 | 15 | 17 | 18 | 20 | 24}

24

ZIEGENKÄSE CRÈME BRÛLÉE

Rote Bete Tatar | Treberbrot ^{5 | 11 | 15}

11



artwork by Kristina Surovova